

# CONTRA PACTS PRIVATE LIMITED

**"Building Trust Through Smart Consultancy."**





# ABOUT US

Contra Pacts Private Limited is a consultancy and advisory firm specializing in project management solutions across the construction and infrastructure sector. We offer expert services in:

- ✓ Financial Management & Utility Planning
- ✓ MEP (Mechanical, Electrical, and Plumbing) Solutions
- ✓ Greenfield Project Development
- ✓ Environmental Licensing & Compliance
- ✓ Liaisoning & Quality Management



Our integrated approach ensures that clients receive end-to-end support — from feasibility analysis to on-ground execution — with a strong focus on regulatory compliance, sustainability, and timely delivery.

We leverage technology and domain expertise to streamline complex projects, reduce delays, and optimize resource utilization. With a commission-based revenue model, we partner with clients on a project-to-project basis, driving value through precision, reliability, and performance.





# OUR MISSION & VISION

## Our Mission

To deliver expert consultancy and advisory solutions that ensure timely, compliant, and sustainable execution of infrastructure projects through strategic planning, technological integration, and professional excellence.

## Our Vision

To be a trusted partner in India's infrastructure growth by setting new benchmarks in project management, environmental responsibility, and quality-driven construction consultancy.

# PROBLEM STATEMENTS



## DELAYS IN PROJECT EXECUTION AND COST OVERRUNS

Over 85% of infrastructure projects in India experience delays and budget overruns due to poor planning, inefficient resource allocation, and weak project monitoring.



## COMPLIANCE AND ENVIRONMENTAL LICENSING BOTTLENECKS

Obtaining environment clearances and regulatory approvals can take 6 to 24 months, significantly delaying greenfield and industrial projects.



## LACK OF INTEGRATED MEP AND UTILITY PLANNING

Most mid-scale construction projects suffer from fragmented Mechanical, Electrical, and Plumbing (MEP) design and utility planning, leading to 20–30% increase in rework costs during execution.



## INADEQUATE USE OF TECHNOLOGY IN PROJECT MANAGEMENT

Only 22% of Indian construction companies use advanced digital tools (like BIM, ERP, or cloud-based project tracking), resulting in poor coordination, limited visibility, and operational inefficiencies.

SOURCES:





# OUR SOLUTIONS



## Integrated Project Management

Timely execution through strategic planning, monitoring, and coordination across all phases.



## Environmental Compliance

Fast-tracking approvals and clearances with end-to-end licensing support.



## Specialized MEP & Utility Services

Efficient design and implementation to reduce rework, delays, and energy costs.



## Tech-Driven Execution

Leveraging digital tools for real-time tracking, resource optimization, and quality control.



# OUR SERVICES



## PROJECT MANAGEMENT & CONSULTANCY

Comprehensive planning, execution, and monitoring for construction and infrastructure projects.



## MEP & UTILITY SOLUTIONS

Expert Mechanical, Electrical, and Plumbing services with a focus on energy efficiency and reliability.



## ENVIRONMENTAL LICENSING & COMPLIANCE

Support in obtaining clearances, managing environmental impact, and ensuring statutory compliance.



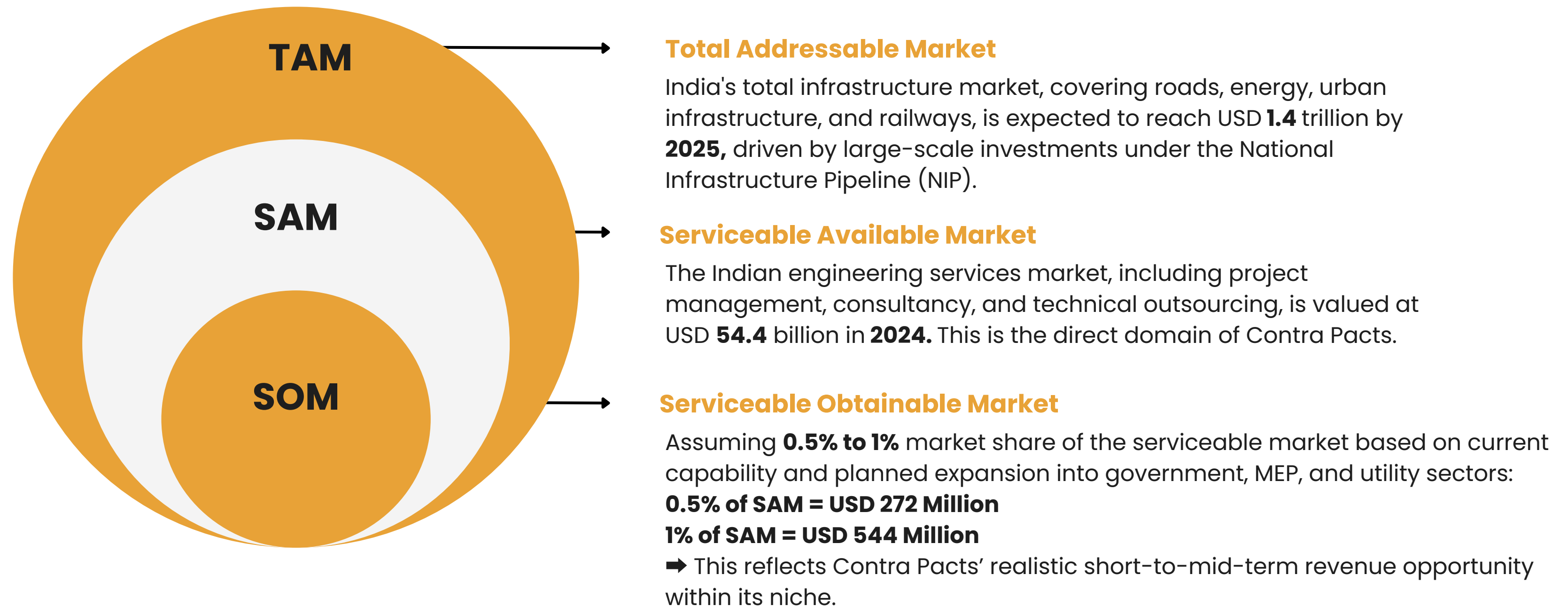
## LIAISON & QUALITY MANAGEMENT

End-to-end coordination with authorities and implementation of quality control protocols on site.





# MARKET POTENTIAL





# GO-TO-MARKET STRATEGY

## Regional Project Hubs

Establish operational presence in high-growth states (e.g., Maharashtra, Gujarat, Tamil Nadu) to serve ongoing and upcoming greenfield infrastructure projects.

## Direct B2B Outreach

Target private infrastructure developers, EPC contractors, and industrial clients with customized proposals for MEP design, licensing, and project advisory.

## Strategic Government Engagement

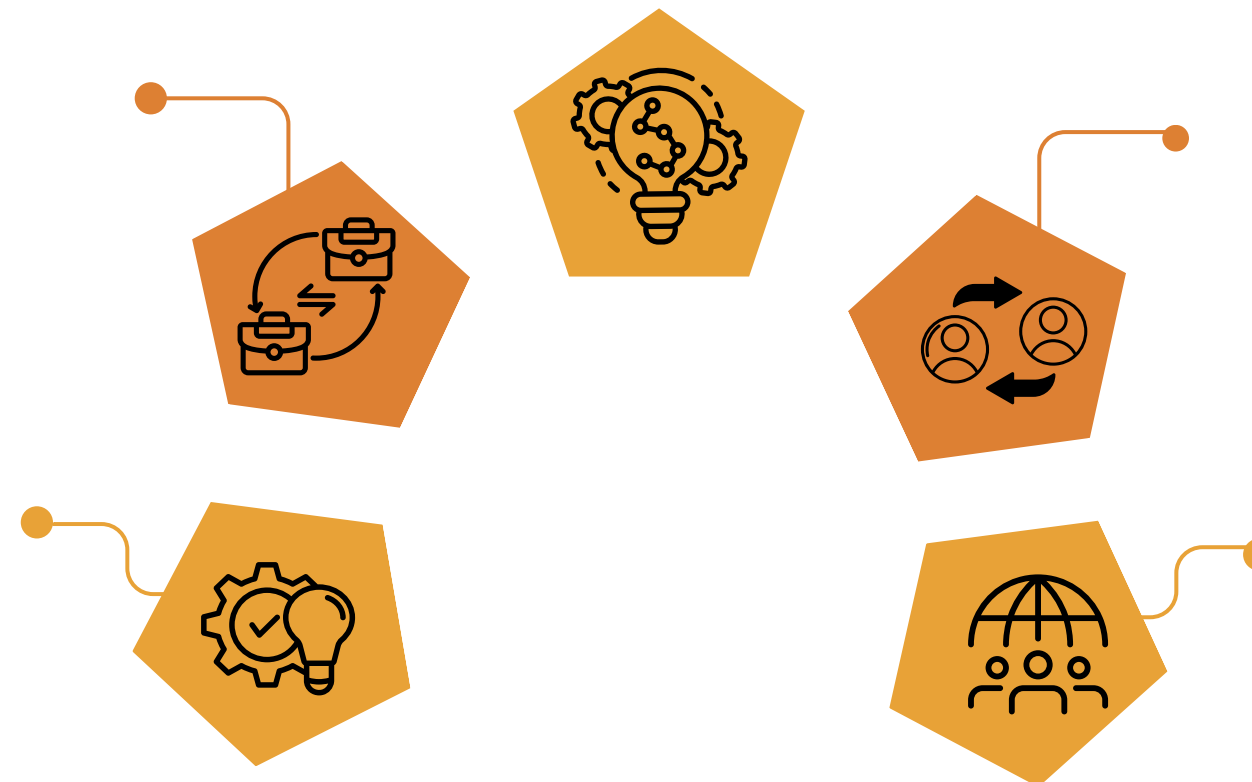
Partner with government bodies and PSUs involved in infrastructure, utilities, and smart city initiatives through tenders, empanelment, and consultancy RFPs.

## Referral & Liaison Network

Leverage networks of architects, civil consultants, and industry liaisons for referral business and project onboarding.

## Digital Presence & Thought Leadership

Build credibility via LinkedIn, webinars, and knowledge-sharing on regulatory changes, environmental norms, and project planning best practices.





# SCALE-UP STRATEGY

## Diversify Services

Add BIM planning, energy audits, and green certification to address evolving compliance and sustainability needs.

## Strengthen Tech Infrastructure

Deploy project management tools and compliance tracking systems for efficient, transparent service delivery.

## Grow & Upskill Talent

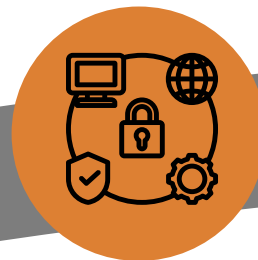
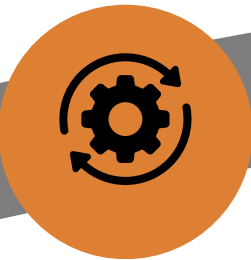
Hire experts in MEP, utility, and environment, while training existing teams through certifications.

## Expand Operations

Establish regional offices in key metros to improve local project execution and reduce approval delays.

## Forge Strategic Alliances

Partner with EPC firms, infra companies, and urban bodies through empanelment and joint projects.





# REVENUE MODEL

## **Project-Based Consulting Fees**

Revenue is generated through fixed or milestone-linked fees for end-to-end consulting across infrastructure, MEP, utility, and licensing projects.

## **Commission on Project Value**

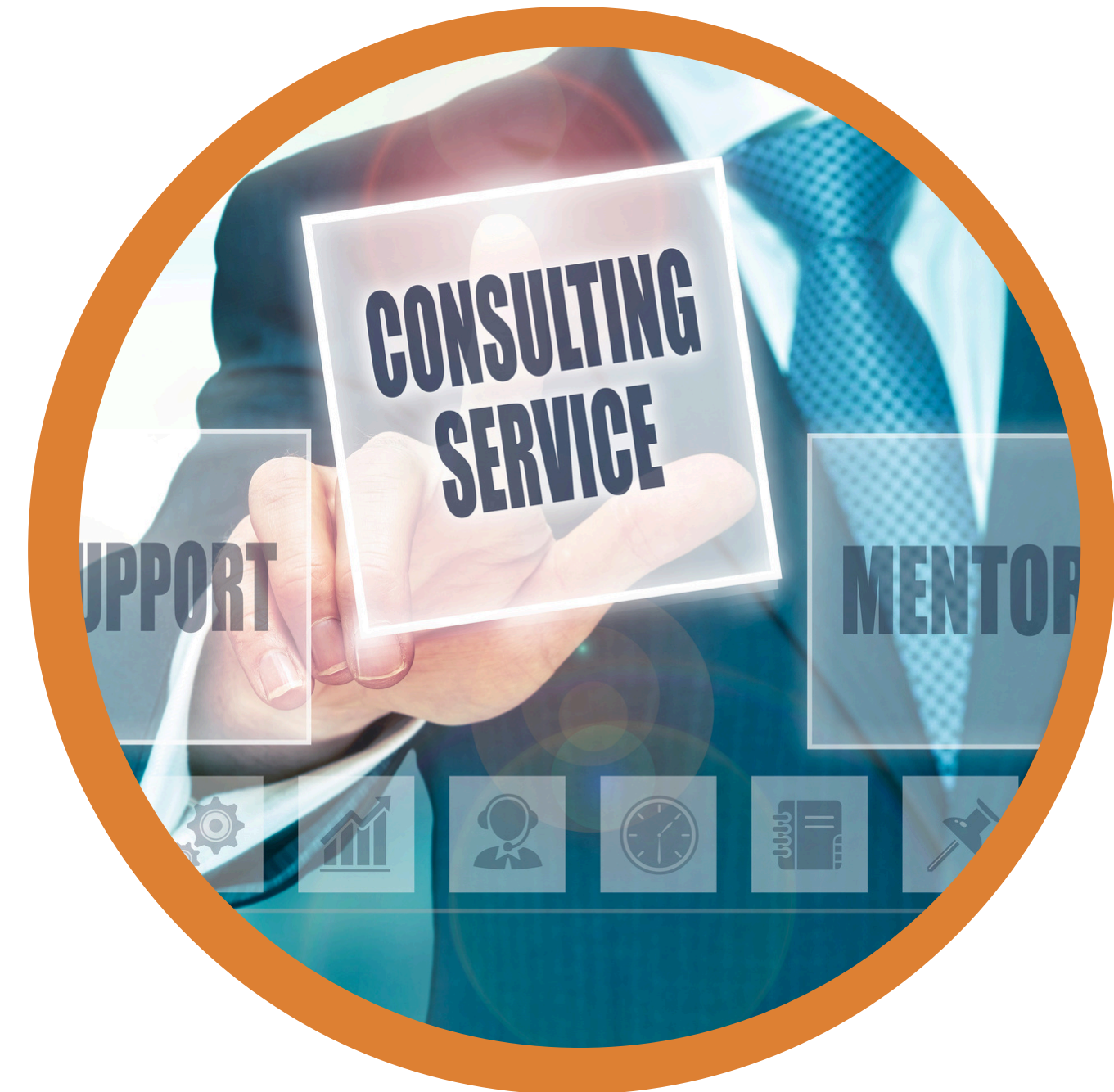
A percentage-based commission is charged on the total project cost for successful execution, planning, and regulatory facilitation.

## **Retainer-Based Advisory**

Long-term clients engage on a monthly or quarterly retainer for ongoing project management, compliance, and quality control services.

## **Specialized Service Charges**

Additional fees are levied for services like environmental clearance, BIM planning, energy audits, and green certifications.





# FUND UTILIZATION PLAN (FUP)

Utilization Heads	% of Total Fund	Fund Allocation	Utilization Timeline
Total			





# COMPETITIVE LANDSCAPE

Competitor	Key Features	Key Features	Contra Pacts Advantage
Traditional Civil Engineering Consultants	Offer basic project planning and structural consulting services	Lack integrated services like MEP, utility, compliance, and environmental licensing	Multi-domain expertise with one-stop solutions for MEP, utility, licensing, and quality management
Freelance Project Managers	Cost-effective, operate on project basis	Limited capacity, inconsistent delivery timelines, no formal compliance backing	Proven track record of timely delivery, structured project workflows, and regulatory experience
Environmental Clearance Agents	Specialized in obtaining environmental approvals	Operate in isolation, lack visibility into project design or execution	Seamlessly integrate environmental clearance with overall project planning and execution
EPC Companies with In-House Teams	Execute full projects end-to-end	Less flexible, high-cost structures, often overlook pre-compliance and strategic consulting	Lean and adaptive consulting partner with focus on licensing, cost efficiency, and timeline control



# OUR USP



## Timely Project Delivery

We specialize in end-to-end execution with strict adherence to deadlines, minimizing cost overruns and project delays.



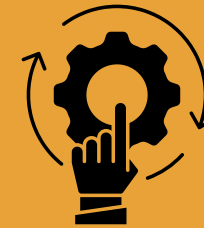
## Integrated Multi-Domain Expertise

Combining MEP, utility planning, financial advisory, and regulatory compliance under one roof ensures seamless coordination and single-window service.



## Regulatory Mastery

Deep understanding of environmental licensing, statutory approvals, and liaisoning accelerates project initiation and reduces compliance risks.

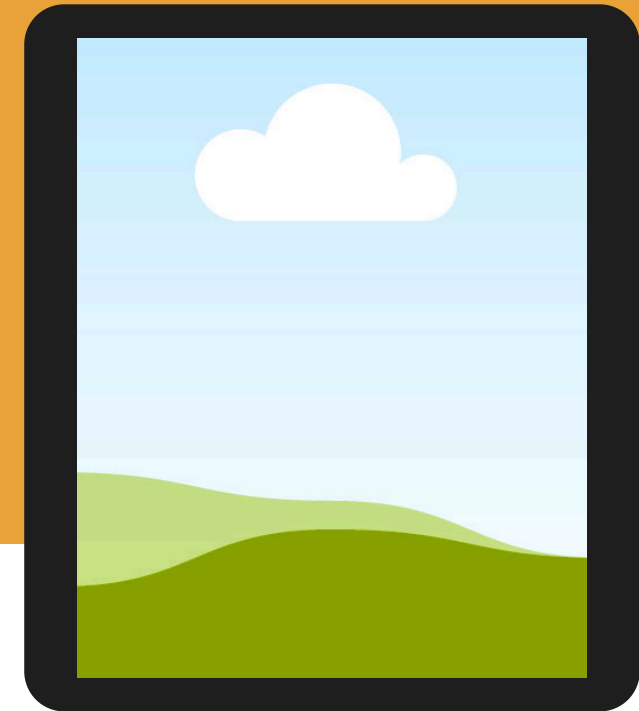
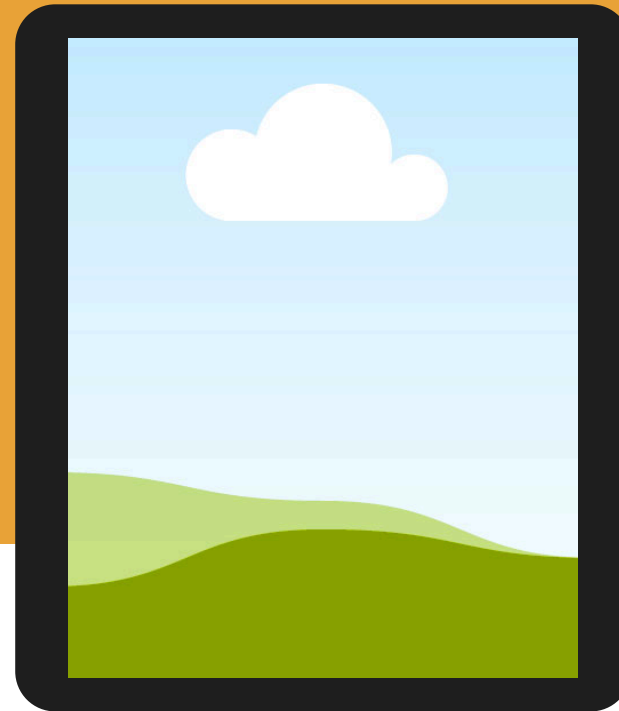
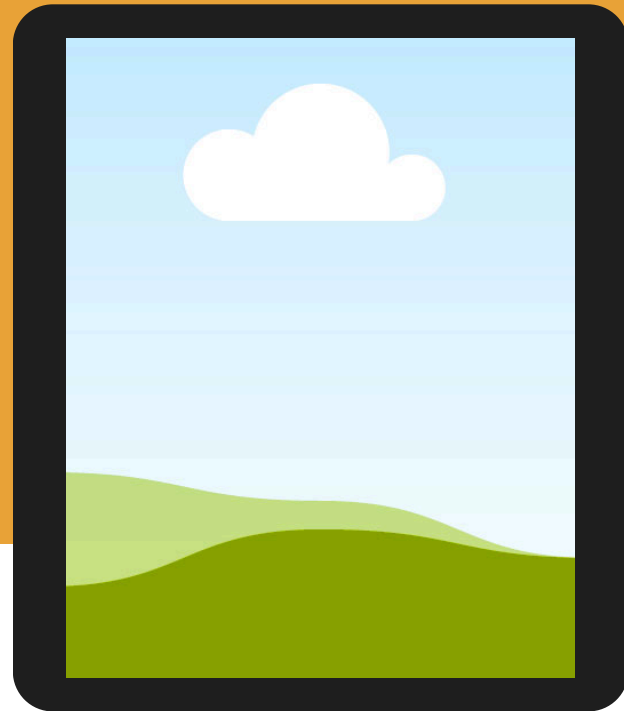


## Technology-Driven Execution

Use of digital tools and dashboards enhances project tracking, transparency, and data-driven decision-making.



# OUR TEAM





# THANK YOU FOR YOUR ATTENTION

## OUR CONTACT



**+19 93191 30554**



**contrapacts@gmail.com**



**Sk-iii/46/204, 2nd Floor, Indirapuram, Shipra Sun City, Ghaziabad, Ghaziabad,  
Uttar Pradesh, India, 201014.**

